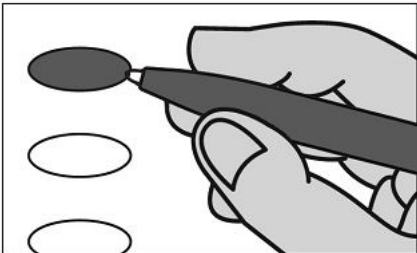


State of Kansas Official General Ballot  
Osage County  
November 4, 2025

Agency City

INSTRUCTIONS



Making Selections

Fill in the oval to the left of the name of your choice. You must darken the oval completely (●), and do not make any marks outside of the oval.

To Write-in a name, you must darken the oval to the left of line provided.

If you tear, deface or make a mistake and wrongfully mark this ballot, you must return it to the Election Board and receive a new ballot.

City of Quenemo

Council Member

Vote for Three or Fewer

- ☐ **Tiffany Calvert**  
Quenemo
- ☐ **Jacob Maher**  
Quenemo
- ☐ **Bruce Rose**  
Quenemo
- ☐ **Angelica Sneath**  
Quenemo
- ☐ **John Wilson**  
Quenemo

☐

Write-in

☐

Write-in

☐

Write-in

Unified School District 456

School Board Member  
District 1 Position 4

Vote for One

- ☐ **Mark Lacey**  
Melvern
- ☐
- Write-in

School Board Member  
District 2 Position 5

Vote for One

- ☐ **Deborah S. Woodson**  
Melvern
- ☐ **Maureen Warner**  
Melvern
- ☐
- Write-in

School Board Member  
District 3 Position 6

Vote for One

- ☐ **Chelsey D. Masenthin**  
Quenemo
- ☐
- Write-in

School Board Member  
District 2 Position 2  
Unexpired Term

Vote for One

- ☐ **Marlin Orear**  
Melvern
- ☐
- Write-in

Frontier Extension District

Extension Council Member

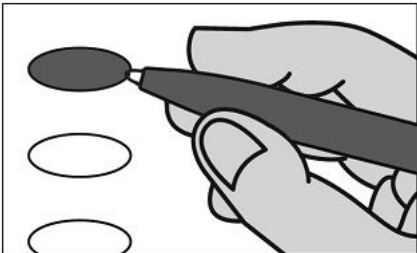
Vote for Two or Fewer

- ☐ **Don Montgomery**  
Burlingame
- ☐
- Write-in
- ☐
- Write-in

State of Kansas Official General Ballot  
Osage County  
November 4, 2025

Agency 421

INSTRUCTIONS



Making Selections

Fill in the oval to the left of the name of your choice. You must darken the oval completely (●), and do not make any marks outside of the oval.

To Write-in a name, you must darken the oval to the left of line provided.

If you tear, deface or make a mistake and wrongfully mark this ballot, you must return it to the Election Board and receive a new ballot.

Frontier Extension District

Extension Council Member  
Vote for Two or Fewer

☐ Don Montgomery  
Burlingame

☐

Write-in

☐

Write-in

Unified School District 421

School Board Member  
Position 1B  
Vote for One

☐ Kelsey Winsky  
Lyndon

☐ Luke V. Edington  
Lyndon

☐

Write-in

School Board Member  
Position 2B  
Vote for One

☐ Melissa Herdman  
Lyndon

☐

Write-in

School Board Member  
Position 3B  
Vote for One

☐ Jennifer Roy  
Vassar

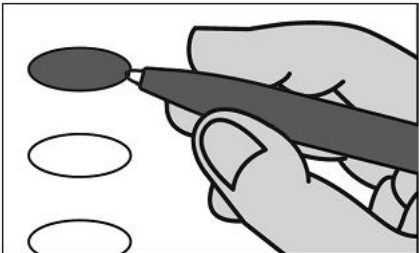
☐

Write-in

State of Kansas Official General Ballot  
Osage County  
November 4, 2025

Agency 456

INSTRUCTIONS



Making Selections

Fill in the oval to the left of the name of your choice. You must darken the oval completely (●), and do not make any marks outside of the oval.

To Write-in a name, you must darken the oval to the left of line provided.

If you tear, deface or make a mistake and wrongfully mark this ballot, you must return it to the Election Board and receive a new ballot.

Unified School District 456

School Board Member  
District 2 Position 2  
Unexpired Term  
Vote for One

☐ Marlin Orear  
Melvern

☐ \_\_\_\_\_  
Write-in

Frontier Extension District

Extension Council Member  
Vote for Two or Fewer

☐ Don Montgomery  
Burlingame

☐ \_\_\_\_\_  
Write-in

☐ \_\_\_\_\_  
Write-in

Unified School District 456

School Board Member  
District 1 Position 4  
Vote for One

☐ Mark Lacey  
Melvern

☐ \_\_\_\_\_  
Write-in

School Board Member  
District 2 Position 5  
Vote for One

☐ Deborah S. Woodson  
Melvern

☐ Maureen Warner  
Melvern

☐ \_\_\_\_\_  
Write-in

School Board Member  
District 3 Position 6  
Vote for One

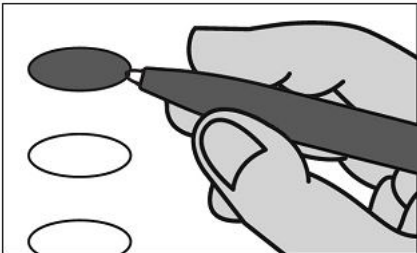
☐ Chelsey D. Masenthin  
Quenemo

☐ \_\_\_\_\_  
Write-in

State of Kansas Official General Ballot  
Osage County  
November 4, 2025

Arvonias 243

INSTRUCTIONS



Making Selections

Fill in the oval to the left of the name of your choice. You must darken the oval completely (●), and do not make any marks outside of the oval.

To Write-in a name, you must darken the oval to the left of line provided.

If you tear, deface or make a mistake and wrongfully mark this ballot, you must return it to the Election Board and receive a new ballot.

Frontier Extension District

Extension Council Member  
Vote for Two or Fewer

☐ Don Montgomery  
Burlingame

☐

Write-in

☐

Write-in

Unified School District 243

School Board Member  
Position 3  
Vote for One

☐ Matthew M. Hopkins II  
Lebo

☐

Write-in

School Board Member  
Position 5  
Vote for One

☐ Bryon T. Rosine  
Lebo

☐

Write-in

School Board Member  
Position 6  
Vote for One

☐ Ryan Durst  
Lebo

☐ Kevin McMillen  
Waverly

☐ Kaleigh Rottler  
Waverly

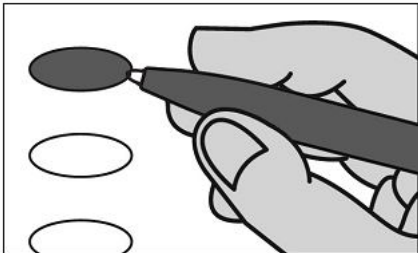
☐

Write-in

State of Kansas Official General Ballot  
Osage County  
November 4, 2025

Arvonias 251

INSTRUCTIONS



Making Selections

Fill in the oval to the left of the name of your choice. You must darken the oval completely (●), and do not make any marks outside of the oval.

To Write-in a name, you must darken the oval to the left of line provided.

If you tear, deface or make a mistake and wrongfully mark this ballot, you must return it to the Election Board and receive a new ballot.

Unified School District 251

School Board Member  
District 1 Position 4

Vote for One

☐ Perry G. Petersen  
Reading

☐ \_\_\_\_\_  
Write-in

Frontier Extension District

Extension Council Member  
Vote for Two or Fewer

☐ Don Montgomery  
Burlingame

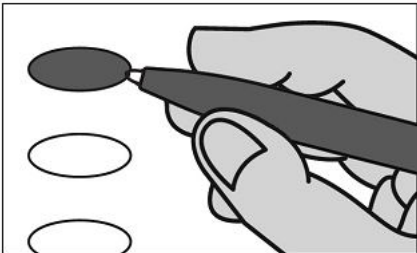
☐ \_\_\_\_\_  
Write-in

☐ \_\_\_\_\_  
Write-in

State of Kansas Official General Ballot  
Osage County  
November 4, 2025

Arvonía 420

INSTRUCTIONS



Making Selections

Fill in the oval to the left of the name of your choice. You must darken the oval completely (●), and do not make any marks outside of the oval.

To Write-in a name, you must darken the oval to the left of line provided.

If you tear, deface or make a mistake and wrongfully mark this ballot, you must return it to the Election Board and receive a new ballot.

Frontier Extension District

Extension Council Member  
Vote for Two or Fewer

☐ Don Montgomery  
Burlingame

☐

Write-in

☐

Write-in

Unified School District 420

School Board Member  
District A Position 4  
Vote for One

☐ Tyler Parsons  
Osage City

☐

Write-in

School Board Member  
District B Position 5  
Vote for One

☐ Alexandra Carson  
Osage City

☐ Eric Ferrer  
Osage City

☐

Write-in

School Board Member  
District C Position 6  
Vote for One

☐ Jessica Dorsey  
Osage City

☐ Corey Linton  
Osage City

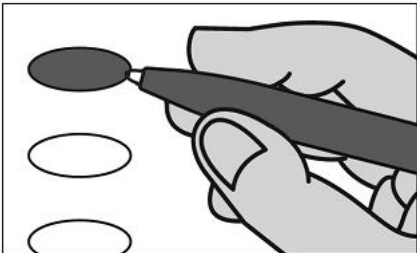
☐

Write-in

State of Kansas Official General Ballot  
Osage County  
November 4, 2025

Barclay 251

INSTRUCTIONS



Making Selections

Fill in the oval to the left of the name of your choice. You must darken the oval completely (●), and do not make any marks outside of the oval.

To Write-in a name, you must darken the oval to the left of line provided.

If you tear, deface or make a mistake and wrongfully mark this ballot, you must return it to the Election Board and receive a new ballot.

Unified School District 251

School Board Member  
District 1 Position 4

Vote for One

☐ Perry G. Petersen  
Reading

☐ \_\_\_\_\_  
Write-in

Frontier Extension District

Extension Council Member  
Vote for Two or Fewer

☐ Don Montgomery  
Burlingame

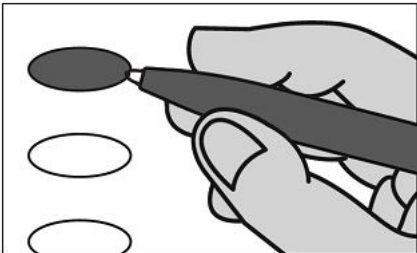
☐ \_\_\_\_\_  
Write-in

☐ \_\_\_\_\_  
Write-in

State of Kansas Official General Ballot  
Osage County  
November 4, 2025

Barclay 420

INSTRUCTIONS



Making Selections

Fill in the oval to the left of the name of your choice. You must darken the oval completely (●), and do not make any marks outside of the oval.

To Write-in a name, you must darken the oval to the left of line provided.

If you tear, deface or make a mistake and wrongfully mark this ballot, you must return it to the Election Board and receive a new ballot.

Frontier Extension District

Extension Council Member  
Vote for Two or Fewer

☐ Don Montgomery  
Burlingame

☐

Write-in

☐

Write-in

Unified School District 420

School Board Member  
District A Position 4  
Vote for One

☐ Tyler Parsons  
Osage City

☐

Write-in

School Board Member  
District B Position 5  
Vote for One

☐ Eric Ferrer  
Osage City

☐ Alexandra Carson  
Osage City

☐

Write-in

School Board Member  
District C Position 6  
Vote for One

☐ Corey Linton  
Osage City

☐ Jessica Dorsey  
Osage City

☐

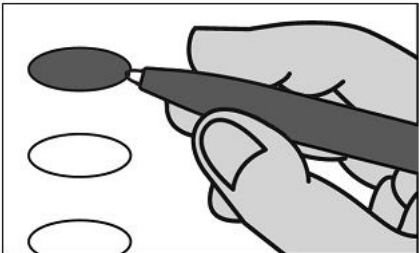
Write-in



State of Kansas Official General Ballot  
Osage County  
November 4, 2025

North Burlingame City

INSTRUCTIONS



Making Selections

Fill in the oval to the left of the name of your choice. You must darken the oval completely (●), and do not make any marks outside of the oval.

To Write-in a name, you must darken the oval to the left of line provided.

If you tear, deface or make a mistake and wrongfully mark this ballot, you must return it to the Election Board and receive a new ballot.

City of Burlingame

Mayor  
Vote for One

☐ Michelle E Mullinix  
Burlingame

☐ \_\_\_\_\_  
Write-in

Council Member  
Vote for Two or Fewer

☐ Kenna L Burns  
Burlingame

☐ \_\_\_\_\_  
Write-in

☐ \_\_\_\_\_  
Write-in

Unified School District 454

School Board Member  
District 1 Position 4  
Vote for One

☐ Krista Rowley  
Burlingame

☐ \_\_\_\_\_  
Write-in

Unified School District 454

School Board Member  
District 2 Position 5  
Vote for One

☐ Pamela Masters  
Burlingame

☐ \_\_\_\_\_  
Write-in

School Board Member  
District 3 Position 6  
Vote for One

☐ Audrey Ross  
Burlingame

☐ \_\_\_\_\_  
Write-in

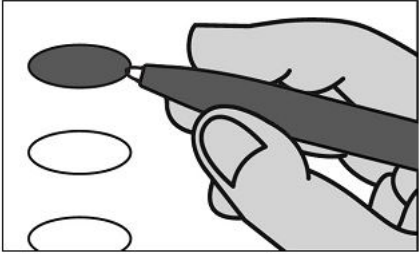
Frontier Extension District

Extension Council Member  
Vote for Two or Fewer

☐ Don Montgomery  
Burlingame

☐ \_\_\_\_\_  
Write-in

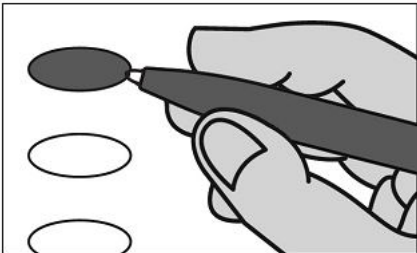
☐ \_\_\_\_\_  
Write-in

| INSTRUCTIONS   |   | Unified School District 434 |  |
|--|---|-----------------------------|--|
| <div></div> <div><b>Making Selections</b><br/>Fill in the oval to the left of the name of your choice. You must darken the oval completely (●), and do not make any marks outside of the oval.<br/><br/>To Write-in a name, you must darken the oval to the left of line provided.<br/><br/>If you tear, deface or make a mistake and wrongfully mark this ballot, you must return it to the Election Board and receive a new ballot.</div> | <div><b>School Board Member<br/>Position 6</b><br/>Vote for One</div> <div><div><input type="radio"/> <b>Stephenie Ganger</b><br/>Carbondale</div><div><input type="radio"/></div><div>Write-in</div></div>   |                             |  |
|  | <div><b>School Board Member<br/>Position 7<br/>Unexpired Term</b><br/>Vote for One</div> <div><div><input type="radio"/> <b>Ben W. Fawl</b><br/>Overbrook</div><div><input type="radio"/> <b>Jamie Sowers</b><br/>Overbrook</div><div><input type="radio"/></div><div>Write-in</div></div>                            |                             |  |
|  | <div><b>Frontier Extension District</b></div> <div><b>Extension Council Member</b><br/>Vote for Two or Fewer</div> <div><div><input type="radio"/> <b>Don Montgomery</b><br/>Burlingame</div><div><input type="radio"/></div><div>Write-in</div></div> <div><div><input type="radio"/></div><div>Write-in</div></div> |                             |  |
|  | <div><b>Unified School District 434</b></div> <div><b>School Board Member<br/>Position 1<br/>Unexpired Term</b><br/>Vote for One</div> <div><div><input type="radio"/> <b>Amy Huizenga</b><br/>Overbrook</div><div><input type="radio"/></div><div>Write-in</div></div>   |                             |  |
| <div><b>School Board Member<br/>Position 4</b><br/>Vote for One</div> <div><div><input type="radio"/> <b>Kylie Wiscombe-Hastings</b><br/>Overbrook</div><div><input type="radio"/></div><div>Write-in</div></div>  |   |                             |  |
| <div><b>School Board Member<br/>Position 5</b><br/>Vote for One</div> <div><div><input type="radio"/> <b>Tanner Black</b><br/>Carbondale</div><div><input type="radio"/></div><div>Write-in</div></div>  |   |                             |  |
| Typ:01 Seq:0010 Spl:01 Ballot Style #10  |   |                             |  |

State of Kansas Official General Ballot  
Osage County  
November 4, 2025

North Burlingame 437

INSTRUCTIONS



Making Selections

Fill in the oval to the left of the name of your choice. You must darken the oval completely (●), and do not make any marks outside of the oval.

To Write-in a name, you must darken the oval to the left of line provided.

If you tear, deface or make a mistake and wrongfully mark this ballot, you must return it to the Election Board and receive a new ballot.

Unified School District 437

School Board Member  
At Large Position 7  
Vote for One

☐ ShaNoah L. Emory  
Topeka

☐ \_\_\_\_\_  
Write-in

School Board Member  
District A Position 4  
Vote for One

☐ Kenneth C. Johnson  
Topeka

☐ Chris Phelps  
Topeka

☐ Nolan Weigel  
Topeka

☐ \_\_\_\_\_  
Write-in

Unified School District 437

School Board Member  
District B Position 2  
Vote for One

☐ Adam Angelini  
Wakarusa

☐ Joe Faul  
Topeka

☐ Chris Tanner  
Topeka

☐ \_\_\_\_\_  
Write-in

School Board Member  
District B Position 5  
Vote for One

☐ Bryan Smith  
Topeka

☐ \_\_\_\_\_  
Write-in

School Board Member  
District C Position 6  
Vote for One

☐ Ty Dragoo  
Topeka

☐ Jamie Stafford  
Topeka

☐ \_\_\_\_\_  
Write-in

Frontier Extension District

Extension Council Member  
Vote for Two or Fewer

☐ Don Montgomery  
Burlingame

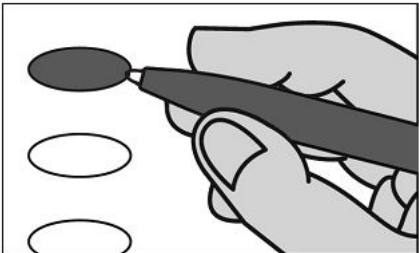
☐ \_\_\_\_\_  
Write-in

☐ \_\_\_\_\_  
Write-in

State of Kansas Official General Ballot  
Osage County  
November 4, 2025

North Burlingame 454

INSTRUCTIONS



Making Selections

Fill in the oval to the left of the name of your choice. You must darken the oval completely (●), and do not make any marks outside of the oval.

To Write-in a name, you must darken the oval to the left of line provided.

If you tear, deface or make a mistake and wrongfully mark this ballot, you must return it to the Election Board and receive a new ballot.

Frontier Extension District

Extension Council Member  
Vote for Two or Fewer

☐ Don Montgomery  
Burlingame

☐

Write-in

☐

Write-in

Unified School District 454

School Board Member  
District 1 Position 4  
Vote for One

☐ Krista Rowley  
Burlingame

☐

Write-in

School Board Member  
District 2 Position 5  
Vote for One

☐ Pamela Masters  
Burlingame

☐

Write-in

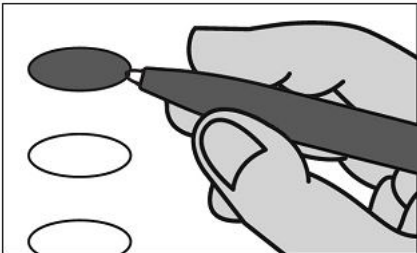
School Board Member  
District 3 Position 6  
Vote for One

☐ Audrey Ross  
Burlingame

☐

Write-in

INSTRUCTIONS



Making Selections

Fill in the oval to the left of the name of your choice. You must darken the oval completely (●), and do not make any marks outside of the oval.

To Write-in a name, you must darken the oval to the left of line provided.

If you tear, deface or make a mistake and wrongfully mark this ballot, you must return it to the Election Board and receive a new ballot.

Frontier Extension District

Extension Council Member  
Vote for Two or Fewer

☐ Don Montgomery  
Burlingame

☐

Write-in

☐

Write-in

Unified School District 330

School Board Member  
Position 4 Sub District 1  
Vote for One

☐ Christopher Campbell  
Dover

☐

Write-in

School Board Member  
Position 5 Sub District 2  
Vote for One

☐ Kevin Kibbee  
Burlingame

☐

Write-in

School Board Member  
Position 6 Sub District 3  
Vote for One

☐ Nick Beasterfeld  
Eskridge

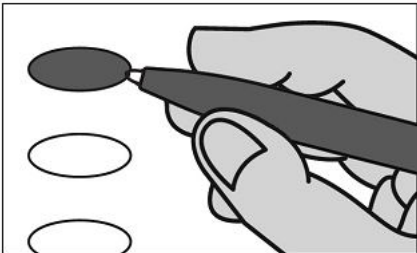
☐

Write-in

State of Kansas Official General Ballot  
Osage County  
November 4, 2025

South Burlingame City

INSTRUCTIONS



Making Selections

Fill in the oval to the left of the name of your choice. You must darken the oval completely (●), and do not make any marks outside of the oval.

To Write-in a name, you must darken the oval to the left of line provided.

If you tear, deface or make a mistake and wrongfully mark this ballot, you must return it to the Election Board and receive a new ballot.

City of Burlingame

Mayor  
Vote for One

☐ Michelle E Mullinix  
Burlingame

☐ \_\_\_\_\_  
Write-in

Council Member  
Vote for Two or Fewer

☐ Kenna L Burns  
Burlingame

☐ \_\_\_\_\_  
Write-in

☐ \_\_\_\_\_  
Write-in

Unified School District 454

School Board Member  
District 1 Position 4  
Vote for One

☐ Krista Rowley  
Burlingame

☐ \_\_\_\_\_  
Write-in

Unified School District 454

School Board Member  
District 2 Position 5  
Vote for One

☐ Pamela Masters  
Burlingame

☐ \_\_\_\_\_  
Write-in

School Board Member  
District 3 Position 6  
Vote for One

☐ Audrey Ross  
Burlingame

☐ \_\_\_\_\_  
Write-in

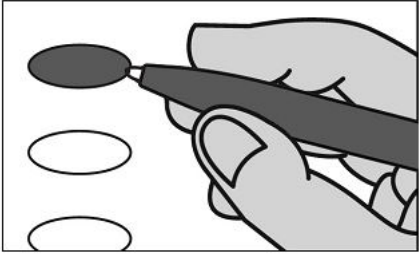
Frontier Extension District

Extension Council Member  
Vote for Two or Fewer

☐ Don Montgomery  
Burlingame

☐ \_\_\_\_\_  
Write-in

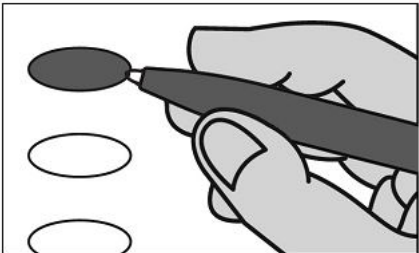
☐ \_\_\_\_\_  
Write-in

| INSTRUCTIONS  |  | Frontier Extension District                    |  |
|---|--|--|--|
|  <p><b>Making Selections</b></p> <p>Fill in the oval to the left of the name of your choice. You must darken the oval completely (●), and do not make any marks outside of the oval.</p> <p>To Write-in a name, you must darken the oval to the left of line provided.</p> <p><b>If you tear, deface or make a mistake and wrongfully mark this ballot, you must return it to the Election Board and receive a new ballot.</b></p> | <p><b>Extension Council Member</b><br/>Vote for Two or Fewer</p> <div><div><input type="radio"/> Don Montgomery<br/>Burlingame</div><div><input type="radio"/></div><div><input type="radio"/></div></div> <div><div>Write-in</div><div>Write-in</div></div> |  |  |
|   | <p><b>Unified School District 454</b></p>  |  |  |
|   | <p><b>School Board Member<br/>District 1 Position 4</b><br/>Vote for One</p> <div><div><input type="radio"/> Krista Rowley<br/>Burlingame</div><div><input type="radio"/></div></div> <div><div>Write-in</div></div>   |  |  |
|   | <p><b>School Board Member<br/>District 2 Position 5</b><br/>Vote for One</p> <div><div><input type="radio"/> Pamela Masters<br/>Burlingame</div><div><input type="radio"/></div></div> <div><div>Write-in</div></div>  |  |  |
| <p><b>School Board Member<br/>District 3 Position 6</b><br/>Vote for One</p> <div><div><input type="radio"/> Audrey Ross<br/>Burlingame</div><div><input type="radio"/></div></div> <div><div>Write-in</div></div>  |  |  |  |
|   |  | <p>Typ:01 Seq:0015 Spl:01 Ballot Style #15</p> |  |

State of Kansas Official General Ballot  
Osage County  
November 4, 2025

Dragoon 420

INSTRUCTIONS



Making Selections

Fill in the oval to the left of the name of your choice. You must darken the oval completely (●), and do not make any marks outside of the oval.

To Write-in a name, you must darken the oval to the left of line provided.

If you tear, deface or make a mistake and wrongfully mark this ballot, you must return it to the Election Board and receive a new ballot.

Frontier Extension District

Extension Council Member  
Vote for Two or Fewer

☐ Don Montgomery  
Burlingame

☐

Write-in

☐

Write-in

Unified School District 420

School Board Member  
District A Position 4  
Vote for One

☐ Tyler Parsons  
Osage City

☐

Write-in

School Board Member  
District B Position 5  
Vote for One

☐ Alexandra Carson  
Osage City

☐ Eric Ferrer  
Osage City

☐

Write-in

School Board Member  
District C Position 6  
Vote for One

☐ Jessica Dorsey  
Osage City

☐ Corey Linton  
Osage City

☐

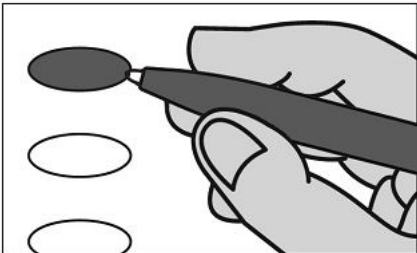
Write-in



State of Kansas Official General Ballot  
Osage County  
November 4, 2025

Dragoon 434

INSTRUCTIONS



Making Selections

Fill in the oval to the left of the name of your choice. You must darken the oval completely (●), and do not make any marks outside of the oval.

To Write-in a name, you must darken the oval to the left of line provided.

If you tear, deface or make a mistake and wrongfully mark this ballot, you must return it to the Election Board and receive a new ballot.

Unified School District 434

School Board Member  
Position 6  
Vote for One

☐ Stephenie Ganger  
Carbondale

☐

Write-in

School Board Member  
Position 7  
Unexpired Term  
Vote for One

☐ Ben W. Fawl  
Overbrook

☐ Jamie Sowers  
Overbrook

☐

Write-in

Frontier Extension District

Extension Council Member  
Vote for Two or Fewer

☐ Don Montgomery  
Burlingame

☐

Write-in

☐

Write-in

Unified School District 434

School Board Member  
Position 1  
Unexpired Term  
Vote for One

☐ Amy Huizenga  
Overbrook

☐

Write-in

School Board Member  
Position 4  
Vote for One

☐ Kylie Wiscombe-Hastings  
Overbrook

☐

Write-in

School Board Member  
Position 5  
Vote for One

☐ Tanner Black  
Carbondale

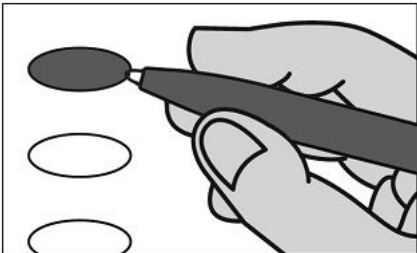
☐

Write-in

State of Kansas Official General Ballot  
Osage County  
November 4, 2025

Dragoon 454

INSTRUCTIONS



Making Selections

Fill in the oval to the left of the name of your choice. You must darken the oval completely (●), and do not make any marks outside of the oval.

To Write-in a name, you must darken the oval to the left of line provided.

If you tear, deface or make a mistake and wrongfully mark this ballot, you must return it to the Election Board and receive a new ballot.

Frontier Extension District

Extension Council Member  
Vote for Two or Fewer

☐ Don Montgomery  
Burlingame

☐

Write-in

☐

Write-in

Unified School District 454

School Board Member  
District 1 Position 4  
Vote for One

☐ Krista Rowley  
Burlingame

☐

Write-in

School Board Member  
District 2 Position 5  
Vote for One

☐ Pamela Masters  
Burlingame

☐

Write-in

School Board Member  
District 3 Position 6  
Vote for One

☐ Audrey Ross  
Burlingame

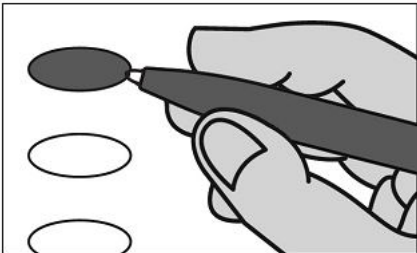
☐

Write-in

State of Kansas Official General Ballot  
Osage County  
November 4, 2025

Elk City

INSTRUCTIONS



Making Selections

Fill in the oval to the left of the name of your choice. You must darken the oval completely (●), and do not make any marks outside of the oval.

To Write-in a name, you must darken the oval to the left of line provided.

If you tear, deface or make a mistake and wrongfully mark this ballot, you must return it to the Election Board and receive a new ballot.

City of Overbrook

Mayor  
Vote for One

☐ Jon Brady  
Overbrook

☐ \_\_\_\_\_  
Write-in

Council Member  
Vote for Two or Fewer

☐ Polly S. Berkley  
Overbrook

☐ Holly Leach  
Overbrook

☐ Cheryl Miller  
Overbrook

☐ \_\_\_\_\_  
Write-in

☐ \_\_\_\_\_  
Write-in

Unified School District 434

School Board Member  
Position 1  
Unexpired Term  
Vote for One

☐ Amy Huizenga  
Overbrook

☐ \_\_\_\_\_  
Write-in

School Board Member  
Position 4  
Vote for One

☐ Kylie Wiscombe-Hastings  
Overbrook

☐ \_\_\_\_\_  
Write-in

School Board Member  
Position 5  
Vote for One

☐ Tanner Black  
Carbondale

☐ \_\_\_\_\_  
Write-in

School Board Member  
Position 6  
Vote for One

☐ Stephenie Ganger  
Carbondale

☐ \_\_\_\_\_  
Write-in

School Board Member  
Position 7  
Unexpired Term  
Vote for One

☐ Ben W. Fawl  
Overbrook

☐ Jamie Sowers  
Overbrook

☐ \_\_\_\_\_  
Write-in

Frontier Extension District

Extension Council Member  
Vote for Two or Fewer

☐ Don Montgomery  
Burlingame

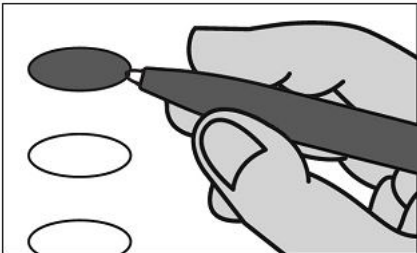
☐ \_\_\_\_\_  
Write-in

☐ \_\_\_\_\_  
Write-in

State of Kansas Official General Ballot  
Osage County  
November 4, 2025

Elk 434

INSTRUCTIONS



Making Selections

Fill in the oval to the left of the name of your choice. You must darken the oval completely (●), and do not make any marks outside of the oval.

To Write-in a name, you must darken the oval to the left of line provided.

If you tear, deface or make a mistake and wrongfully mark this ballot, you must return it to the Election Board and receive a new ballot.

Unified School District 434

School Board Member  
Position 6  
Vote for One

☐ Stephenie Ganger  
Carbondale

☐

Write-in

School Board Member  
Position 7  
Unexpired Term  
Vote for One

☐ Ben W. Fawl  
Overbrook

☐ Jamie Sowers  
Overbrook

☐

Write-in

Frontier Extension District

Extension Council Member  
Vote for Two or Fewer

☐ Don Montgomery  
Burlingame

☐

Write-in

☐

Write-in

Unified School District 434

School Board Member  
Position 1  
Unexpired Term  
Vote for One

☐ Amy Huizenga  
Overbrook

☐

Write-in

School Board Member  
Position 4  
Vote for One

☐ Kylie Wiscombe-Hastings  
Overbrook

☐

Write-in

School Board Member  
Position 5  
Vote for One

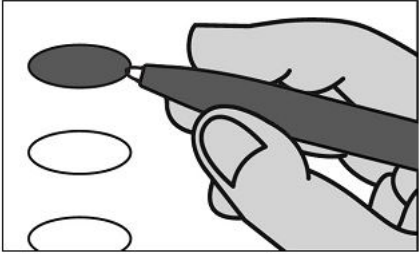
☐ Tanner Black  
Carbondale

☐

Write-in

State of Kansas Official General Ballot  
Osage County  
November 4, 2025

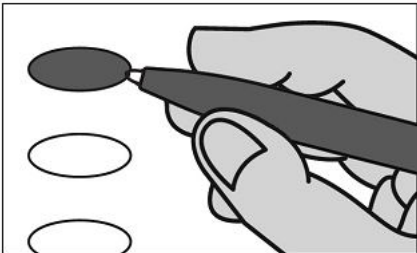
Elk 450

| INSTRUCTIONS  | Unified School District 450  | Question Submitted  |
|---|--|---|
| <div></div> <div><p><b>Making Selections</b></p><p>Fill in the oval to the left of the name of your choice. You must darken the oval completely (●), and do not make any marks outside of the oval.</p><p>To Write-in a name, you must darken the oval to the left of line provided.</p><p>To vote in favor of a question darken the oval to the left of the word "Yes." To vote against it, darken the oval to the left of the word "No."</p><p>If you tear, deface or make a mistake and wrongfully mark this ballot, you must return it to the Election Board and receive a new ballot.</p></div> | <div><p><b>School Board Member<br/>District C Position 6</b><br/>Vote for One</p><div><div><input type="radio"/> <b>Kristin Fisher</b><br/>Berryton</div><div><input type="radio"/> <b>Christina M. Flaming</b><br/>Berryton</div><div><input type="radio"/></div><div>Write-in</div></div></div> <div><p><b>Frontier Extension District</b></p><p><b>Extension Council Member</b><br/>Vote for Two or Fewer</p><div><div><input type="radio"/> <b>Don Montgomery</b><br/>Burlingame</div><div><input type="radio"/></div><div><input type="radio"/></div><div>Write-in</div><div>Write-in</div></div></div> | <div><p>Shall the following be adopted?</p><p>Shall Unified School District No. 450, Shawnee County, Kansas (Shawnee Heights) (The "District") be authorized to issue general obligation bonds in an amount not to exceed \$65,000,000 (the "Bonds") to pay the costs to construct, furnish and equip: (a) improvements, additions and renovations to Berryton, Shawnee Heights, Tecumseh North, and Tecumseh South Elementary Schools, including classroom, ADA accessible playgrounds, building, mechanical, HVAC, parking and pick-up/drop-off improvements; (b) improvements, additions and renovations to Shawnee Heights Middle School, including classroom, new gymnasium, building, mechanical, HVAC, parking and transportation improvements; (c) improvements, additions and renovations to Shawnee Heights High School, including classroom, new gymnasium, stadium fieldhouse addition, kitchen, building, mechanical, HVAC, parking and transportation improvements; and (d) all improvements related thereto (the "Project"); and pay costs of issuance and interest on the Bonds during construction of the Project, all pursuant to the provisions of K.S.A. 10-101 <i>et seq.</i>, K.S.A 25-2018(f), K.S.A. 72-5457, and K.S.A 72-5458 <i>et seq.</i>?</p><div><div><input type="radio"/> <b>Yes</b></div><div><input type="radio"/> <b>No</b></div></div></div> |
| <div><p><b>Unified School District 450</b></p><p><b>School Board Member<br/>District A Position 4</b><br/>Vote for One</p><div><div><input type="radio"/> <b>Buck Reuter</b><br/>Tecumseh</div><div><input type="radio"/> <b>Damon Lee Shore</b><br/>Topeka</div><div><input type="radio"/></div><div>Write-in</div></div></div> <div><p><b>School Board Member<br/>District B Position 5</b><br/>Vote for One</p><div><div><input type="radio"/> <b>Erica Kay Price</b><br/>Tecumseh</div><div><input type="radio"/></div><div>Write-in</div></div></div>  |  |   |

State of Kansas Official General Ballot  
Osage County  
November 4, 2025

Fairfax 421

INSTRUCTIONS



Making Selections

Fill in the oval to the left of the name of your choice. You must darken the oval completely (●), and do not make any marks outside of the oval.

To Write-in a name, you must darken the oval to the left of line provided.

If you tear, deface or make a mistake and wrongfully mark this ballot, you must return it to the Election Board and receive a new ballot.

Frontier Extension District

Extension Council Member  
Vote for Two or Fewer

☐ Don Montgomery  
Burlingame

☐

Write-in

☐

Write-in

Unified School District 421

School Board Member  
Position 1B  
Vote for One

☐ Luke V. Edington  
Lyndon

☐ Kelsey Winsky  
Lyndon

☐

Write-in

School Board Member  
Position 2B  
Vote for One

☐ Melissa Herdman  
Lyndon

☐

Write-in

School Board Member  
Position 3B  
Vote for One

☐ Jennifer Roy  
Vassar

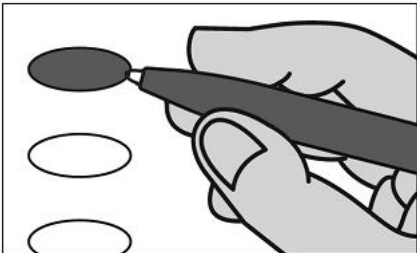
☐

Write-in

State of Kansas Official General Ballot  
Osage County  
November 4, 2025

Fairfax 434

INSTRUCTIONS



Making Selections

Fill in the oval to the left of the name of your choice. You must darken the oval completely (●), and do not make any marks outside of the oval.

To Write-in a name, you must darken the oval to the left of line provided.

If you tear, deface or make a mistake and wrongfully mark this ballot, you must return it to the Election Board and receive a new ballot.

Unified School District 434

School Board Member  
Position 6  
Vote for One

☐ Stephenie Ganger  
Carbondale

☐

Write-in

School Board Member  
Position 7  
Unexpired Term  
Vote for One

☐ Jamie Sowers  
Overbrook

☐ Ben W. Fawl  
Overbrook

☐

Write-in

Frontier Extension District

Extension Council Member  
Vote for Two or Fewer

☐ Don Montgomery  
Burlingame

☐

Write-in

☐

Write-in

Unified School District 434

School Board Member  
Position 1  
Unexpired Term  
Vote for One

☐ Amy Huizenga  
Overbrook

☐

Write-in

School Board Member  
Position 4  
Vote for One

☐ Kylie Wiscombe-Hastings  
Overbrook

☐

Write-in

School Board Member  
Position 5  
Vote for One

☐ Tanner Black  
Carbondale

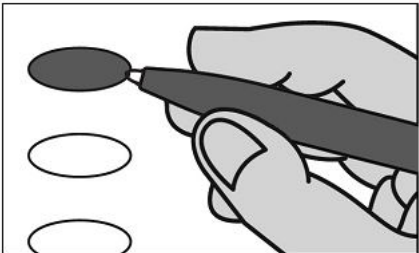
☐

Write-in

State of Kansas Official General Ballot  
Osage County  
November 4, 2025

Grant

INSTRUCTIONS



Making Selections

Fill in the oval to the left of the name of your choice. You must darken the oval completely (●), and do not make any marks outside of the oval.

To Write-in a name, you must darken the oval to the left of line provided.

If you tear, deface or make a mistake and wrongfully mark this ballot, you must return it to the Election Board and receive a new ballot.

Frontier Extension District

Extension Council Member  
Vote for Two or Fewer

☐ Don Montgomery  
Burlingame

☐

Write-in

☐

Write-in

Unified School District 420

School Board Member  
District A Position 4  
Vote for One

☐ Tyler Parsons  
Osage City

☐

Write-in

School Board Member  
District B Position 5  
Vote for One

☐ Alexandra Carson  
Osage City

☐ Eric Ferrer  
Osage City

☐

Write-in

School Board Member  
District C Position 6  
Vote for One

☐ Jessica Dorsey  
Osage City

☐ Corey Linton  
Osage City

☐

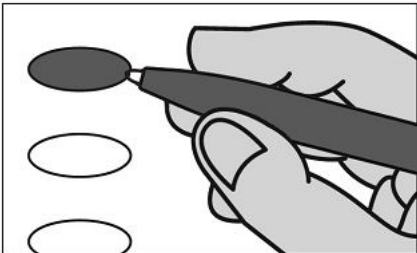
Write-in



State of Kansas Official General Ballot  
Osage County  
November 4, 2025

Lincoln 287

INSTRUCTIONS



Making Selections

Fill in the oval to the left of the name of your choice. You must darken the oval completely (●), and do not make any marks outside of the oval.

To Write-in a name, you must darken the oval to the left of line provided.

If you tear, deface or make a mistake and wrongfully mark this ballot, you must return it to the Election Board and receive a new ballot.

Frontier Extension District

Extension Council Member  
Vote for Two or Fewer

☐ Don Montgomery  
Burlingame

☐

Write-in

☐

Write-in

Unified School District 287

School Board Member  
Postion 4  
Vote for One

☐ Devin Wray  
Ottawa

☐ Jayson Wiscombe  
Pomona

☐

Write-in

School Board Member  
Position 5  
Vote for One

☐ Denise Robinson  
Pomona

☐

Write-in

School Board Member  
Position 6  
Vote for One

☐ Stephanie Anderson  
Pomona

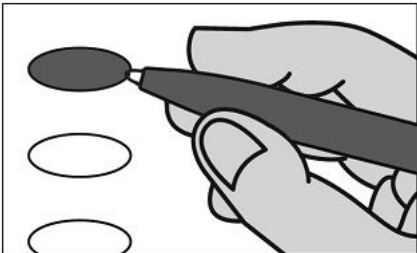
☐

Write-in

State of Kansas Official General Ballot  
Osage County  
November 4, 2025

Lincoln 456

INSTRUCTIONS



Making Selections

Fill in the oval to the left of the name of your choice. You must darken the oval completely (●), and do not make any marks outside of the oval.

To Write-in a name, you must darken the oval to the left of line provided.

If you tear, deface or make a mistake and wrongfully mark this ballot, you must return it to the Election Board and receive a new ballot.

Unified School District 456

School Board Member  
District 2 Position 2  
Unexpired Term  
Vote for One

☐ Marlin Orear  
Melvern

☐ \_\_\_\_\_  
Write-in

Frontier Extension District

Extension Council Member  
Vote for Two or Fewer

☐ Don Montgomery  
Burlingame

☐ \_\_\_\_\_  
Write-in

☐ \_\_\_\_\_  
Write-in

Unified School District 456

School Board Member  
District 1 Position 4  
Vote for One

☐ Mark Lacey  
Melvern

☐ \_\_\_\_\_  
Write-in

School Board Member  
District 2 Position 5  
Vote for One

☐ Deborah S. Woodson  
Melvern

☐ Maureen Warner  
Melvern

☐ \_\_\_\_\_  
Write-in

School Board Member  
District 3 Position 6  
Vote for One

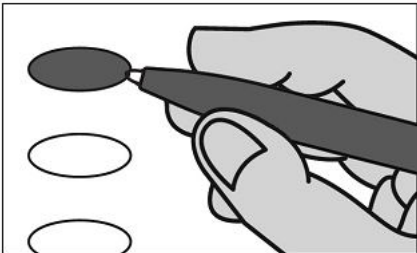
☐ Chelsey D. Masenthin  
Quenemo

☐ \_\_\_\_\_  
Write-in

State of Kansas Official General Ballot  
Osage County  
November 4, 2025

Melvern City

INSTRUCTIONS



Making Selections

Fill in the oval to the left of the name of your choice. You must darken the oval completely (●), and do not make any marks outside of the oval.

To Write-in a name, you must darken the oval to the left of line provided.

If you tear, deface or make a mistake and wrongfully mark this ballot, you must return it to the Election Board and receive a new ballot.

City of Melvern

Mayor  
Vote for One

☐ Eric W. Vogeler  
Melvern

☐ \_\_\_\_\_  
Write-in

Council Member  
Vote for Three or Fewer

☐ Daniel G. Bowers  
Melvern

☐ \_\_\_\_\_  
Write-in

☐ \_\_\_\_\_  
Write-in

☐ \_\_\_\_\_  
Write-in

Unified School District 456

School Board Member  
District 1 Position 4  
Vote for One

☐ Mark Lacey  
Melvern

☐ \_\_\_\_\_  
Write-in

School Board Member  
District 2 Position 5  
Vote for One

☐ Maureen Warner  
Melvern

☐ Deborah S. Woodson  
Melvern

☐ \_\_\_\_\_  
Write-in

School Board Member  
District 3 Position 6  
Vote for One

☐ Chelsey D. Masenthin  
Quenemo

☐ \_\_\_\_\_  
Write-in

School Board Member  
District 2 Position 2  
Unexpired Term  
Vote for One

☐ Marlin Orear  
Melvern

☐ \_\_\_\_\_  
Write-in

Frontier Extension District

Extension Council Member  
Vote for Two or Fewer

☐ Don Montgomery  
Burlingame

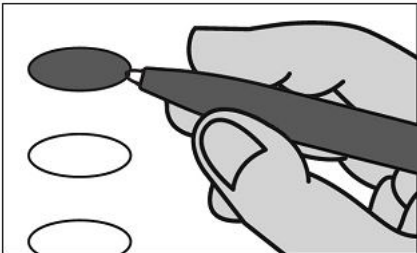
☐ \_\_\_\_\_  
Write-in

☐ \_\_\_\_\_  
Write-in

State of Kansas Official General Ballot  
Osage County  
November 4, 2025

Melvorn 421

INSTRUCTIONS



Making Selections

Fill in the oval to the left of the name of your choice. You must darken the oval completely (●), and do not make any marks outside of the oval.

To Write-in a name, you must darken the oval to the left of line provided.

If you tear, deface or make a mistake and wrongfully mark this ballot, you must return it to the Election Board and receive a new ballot.

Frontier Extension District

Extension Council Member  
Vote for Two or Fewer

☐ Don Montgomery  
Burlingame

☐

Write-in

☐

Write-in

Unified School District 421

School Board Member  
Position 1B  
Vote for One

☐ Kelsey Winsky  
Lyndon

☐ Luke V. Edington  
Lyndon

☐

Write-in

School Board Member  
Position 2B  
Vote for One

☐ Melissa Herdman  
Lyndon

☐

Write-in

School Board Member  
Position 3B  
Vote for One

☐ Jennifer Roy  
Vassar

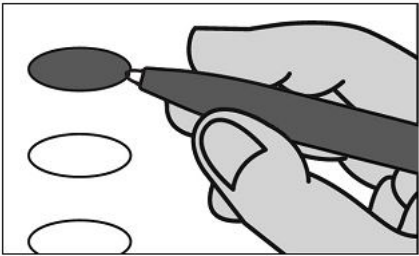
☐

Write-in

State of Kansas Official General Ballot  
Osage County  
November 4, 2025

Melvorn 456

INSTRUCTIONS



Making Selections

Fill in the oval to the left of the name of your choice. You must darken the oval completely (●), and do not make any marks outside of the oval.

To Write-in a name, you must darken the oval to the left of line provided.

If you tear, deface or make a mistake and wrongfully mark this ballot, you must return it to the Election Board and receive a new ballot.

Unified School District 456

School Board Member  
District 2 Position 2  
Unexpired Term  
Vote for One

☐ Marlin Orear  
Melvorn

☐ \_\_\_\_\_  
Write-in

Frontier Extension District

Extension Council Member  
Vote for Two or Fewer

☐ Don Montgomery  
Burlingame

☐ \_\_\_\_\_  
Write-in

☐ \_\_\_\_\_  
Write-in

Unified School District 456

School Board Member  
District 1 Position 4  
Vote for One

☐ Mark Lacey  
Melvorn

☐ \_\_\_\_\_  
Write-in

School Board Member  
District 2 Position 5  
Vote for One

☐ Maureen Warner  
Melvorn

☐ Deborah S. Woodson  
Melvorn

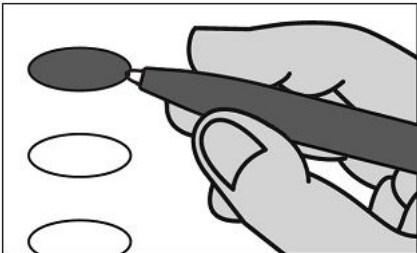
☐ \_\_\_\_\_  
Write-in

School Board Member  
District 3 Position 6  
Vote for One

☐ Chelsey D. Masenthin  
Quenemo

☐ \_\_\_\_\_  
Write-in

INSTRUCTIONS



Making Selections

Fill in the oval to the left of the name of your choice. You must darken the oval completely (●), and do not make any marks outside of the oval.

To Write-in a name, you must darken the oval to the left of line provided.

If you tear, deface or make a mistake and wrongfully mark this ballot, you must return it to the Election Board and receive a new ballot.

Frontier Extension District

Extension Council Member  
Vote for Two or Fewer

☐ Don Montgomery  
Burlingame

☐

Write-in

☐

Write-in

Unified School District 287

School Board Member  
Postion 4  
Vote for One

☐ Jayson Wiscombe  
Pomona

☐ Devin Wray  
Ottawa

☐

Write-in

School Board Member  
Position 5  
Vote for One

☐ Denise Robinson  
Pomona

☐

Write-in

School Board Member  
Position 6  
Vote for One

☐ Stephanie Anderson  
Pomona

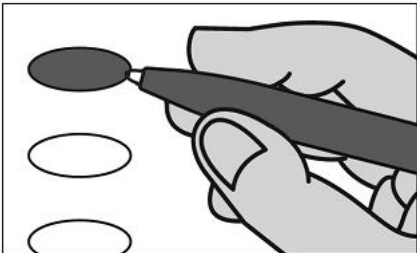
☐

Write-in

State of Kansas Official General Ballot  
Osage County  
November 4, 2025

Michigan Valley 434

INSTRUCTIONS



Making Selections

Fill in the oval to the left of the name of your choice. You must darken the oval completely (●), and do not make any marks outside of the oval.

To Write-in a name, you must darken the oval to the left of line provided.

If you tear, deface or make a mistake and wrongfully mark this ballot, you must return it to the Election Board and receive a new ballot.

Unified School District 434

School Board Member  
Position 6  
Vote for One

☐ Stephenie Ganger  
Carbondale

☐

Write-in

School Board Member  
Position 7  
Unexpired Term  
Vote for One

☐ Jamie Sowers  
Overbrook

☐ Ben W. Fawl  
Overbrook

☐

Write-in

Frontier Extension District

Extension Council Member  
Vote for Two or Fewer

☐ Don Montgomery  
Burlingame

☐

Write-in

☐

Write-in

Unified School District 434

School Board Member  
Position 1  
Unexpired Term  
Vote for One

☐ Amy Huizenga  
Overbrook

☐

Write-in

School Board Member  
Position 4  
Vote for One

☐ Kylie Wiscombe-Hastings  
Overbrook

☐

Write-in

School Board Member  
Position 5  
Vote for One

☐ Tanner Black  
Carbondale

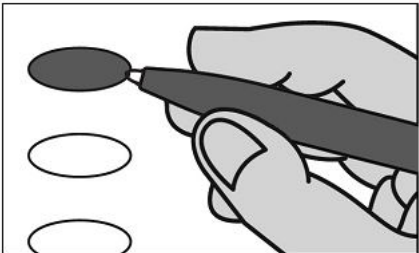
☐

Write-in

State of Kansas Official General Ballot  
Osage County  
November 4, 2025

Olivet City

INSTRUCTIONS



Making Selections

Fill in the oval to the left of the name of your choice. You must darken the oval completely (●), and do not make any marks outside of the oval.

To Write-in a name, you must darken the oval to the left of line provided.

If you tear, deface or make a mistake and wrongfully mark this ballot, you must return it to the Election Board and receive a new ballot.

City of Olivet

Mayor  
Vote for One

No Candidate Nominated

☐

Write-in

Council Member  
Vote for Five or Fewer

No Candidate Nominated

☐

Write-in

☐

Write-in

☐

Write-in

☐

Write-in

☐

Write-in

Unified School District 456

School Board Member  
District 1 Position 4  
Vote for One

☐ Mark Lacey  
Melvern

☐

Write-in

School Board Member  
District 2 Position 5  
Vote for One

☐ Deborah S. Woodson  
Melvern

☐ Maureen Warner  
Melvern

☐

Write-in

School Board Member  
District 3 Position 6  
Vote for One

☐ Chelsey D. Masenthin  
Quenemo

☐

Write-in

School Board Member  
District 2 Position 2  
Unexpired Term  
Vote for One

☐ Marlin Orear  
Melvern

☐

Write-in

Frontier Extension District

Extension Council Member  
Vote for Two or Fewer

☐ Don Montgomery  
Burlingame

☐

Write-in

☐

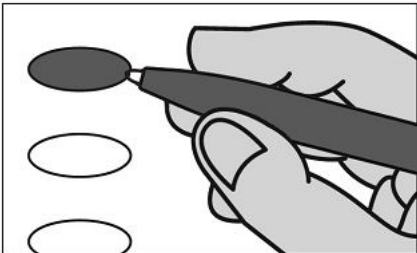
Write-in



State of Kansas Official General Ballot  
Osage County  
November 4, 2025

Olivet 420

INSTRUCTIONS



Making Selections

Fill in the oval to the left of the name of your choice. You must darken the oval completely (●), and do not make any marks outside of the oval.

To Write-in a name, you must darken the oval to the left of line provided.

If you tear, deface or make a mistake and wrongfully mark this ballot, you must return it to the Election Board and receive a new ballot.

Frontier Extension District

Extension Council Member  
Vote for Two or Fewer

☐ Don Montgomery  
Burlingame

☐

Write-in

☐

Write-in

Unified School District 420

School Board Member  
District A Position 4  
Vote for One

☐ Tyler Parsons  
Osage City

☐

Write-in

School Board Member  
District B Position 5  
Vote for One

☐ Alexandra Carson  
Osage City

☐ Eric Ferrer  
Osage City

☐

Write-in

School Board Member  
District C Position 6  
Vote for One

☐ Jessica Dorsey  
Osage City

☐ Corey Linton  
Osage City

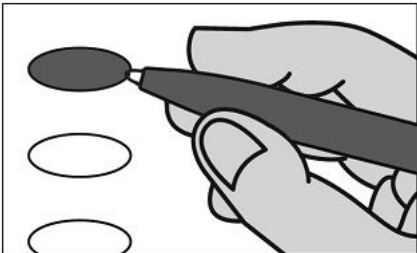
☐

Write-in

State of Kansas Official General Ballot  
Osage County  
November 4, 2025

Olivet 421

INSTRUCTIONS



Making Selections

Fill in the oval to the left of the name of your choice. You must darken the oval completely (●), and do not make any marks outside of the oval.

To Write-in a name, you must darken the oval to the left of line provided.

If you tear, deface or make a mistake and wrongfully mark this ballot, you must return it to the Election Board and receive a new ballot.

Frontier Extension District

Extension Council Member  
Vote for Two or Fewer

☐ Don Montgomery  
Burlingame

☐

Write-in

☐

Write-in

Unified School District 421

School Board Member  
Position 1B  
Vote for One

☐ Kelsey Winsky  
Lyndon

☐ Luke V. Edington  
Lyndon

☐

Write-in

School Board Member  
Position 2B  
Vote for One

☐ Melissa Herdman  
Lyndon

☐

Write-in

School Board Member  
Position 3B  
Vote for One

☐ Jennifer Roy  
Vassar

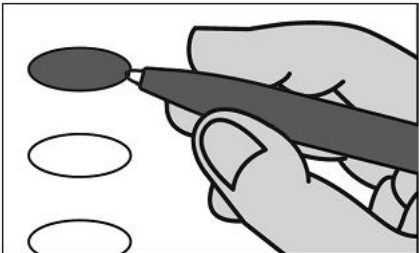
☐

Write-in

State of Kansas Official General Ballot  
Osage County  
November 4, 2025

Olivet 456

INSTRUCTIONS



Making Selections

Fill in the oval to the left of the name of your choice. You must darken the oval completely (●), and do not make any marks outside of the oval.

To Write-in a name, you must darken the oval to the left of line provided.

If you tear, deface or make a mistake and wrongfully mark this ballot, you must return it to the Election Board and receive a new ballot.

Unified School District 456

School Board Member  
District 2 Position 2  
Unexpired Term  
Vote for One

☐ Marlin Orear  
Melvern

☐ \_\_\_\_\_  
Write-in

Frontier Extension District

Extension Council Member  
Vote for Two or Fewer

☐ Don Montgomery  
Burlingame

☐ \_\_\_\_\_  
Write-in

☐ \_\_\_\_\_  
Write-in

Unified School District 456

School Board Member  
District 1 Position 4  
Vote for One

☐ Mark Lacey  
Melvern

☐ \_\_\_\_\_  
Write-in

School Board Member  
District 2 Position 5  
Vote for One

☐ Deborah S. Woodson  
Melvern

☐ Maureen Warner  
Melvern

☐ \_\_\_\_\_  
Write-in

School Board Member  
District 3 Position 6  
Vote for One

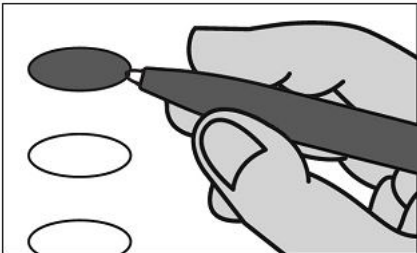
☐ Chelsey D. Masenthin  
Quenemo

☐ \_\_\_\_\_  
Write-in

State of Kansas Official General Ballot  
Osage County  
November 4, 2025

Osage City Ward 1

INSTRUCTIONS



Making Selections

Fill in the oval to the left of the name of your choice. You must darken the oval completely (●), and do not make any marks outside of the oval.

To Write-in a name, you must darken the oval to the left of line provided.

If you tear, deface or make a mistake and wrongfully mark this ballot, you must return it to the Election Board and receive a new ballot.

Osage City

Council Member  
Ward 1

Vote for One

☐ Michael Ray Gilliland  
Osage City

☐ \_\_\_\_\_  
Write-in

Unified School District 420

School Board Member  
District A Position 4

Vote for One

☐ Tyler Parsons  
Osage City

☐ \_\_\_\_\_  
Write-in

School Board Member  
District B Position 5

Vote for One

☐ Alexandra Carson  
Osage City

☐ Eric Ferrer  
Osage City

☐ \_\_\_\_\_  
Write-in

Unified School District 420

School Board Member  
District C Position 6

Vote for One

☐ Jessica Dorsey  
Osage City

☐ Corey Linton  
Osage City

☐ \_\_\_\_\_  
Write-in

Frontier Extension District

Extension Council Member

Vote for Two or Fewer

☐ Don Montgomery  
Burlingame

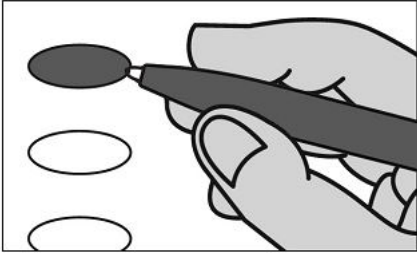
☐ \_\_\_\_\_  
Write-in

☐ \_\_\_\_\_  
Write-in

State of Kansas Official General Ballot  
Osage County  
November 4, 2025

Osage City Ward 2

INSTRUCTIONS



Making Selections

Fill in the oval to the left of the name of your choice. You must darken the oval completely (●), and do not make any marks outside of the oval.

To Write-in a name, you must darken the oval to the left of line provided.

If you tear, deface or make a mistake and wrongfully mark this ballot, you must return it to the Election Board and receive a new ballot.

Unified School District 420

School Board Member  
District B Position 5

Vote for One

- ☐ Alexandra Carson  
Osage City
- ☐ Eric Ferrer  
Osage City

☐ \_\_\_\_\_  
Write-in

School Board Member  
District C Position 6

Vote for One

- ☐ Jessica Dorsey  
Osage City
- ☐ Corey Linton  
Osage City

☐ \_\_\_\_\_  
Write-in

Frontier Extension District

Extension Council Member

Vote for Two or Fewer

- ☐ Don Montgomery  
Burlingame

☐ \_\_\_\_\_  
Write-in

☐ \_\_\_\_\_  
Write-in

Osage City

Council Member  
Ward 2

Vote for One

- ☐ Shirley Bausman  
Osage City
- ☐ Joe Thomas Ryan  
Osage City

☐ \_\_\_\_\_  
Write-in

Unified School District 420

School Board Member  
District A Position 4

Vote for One

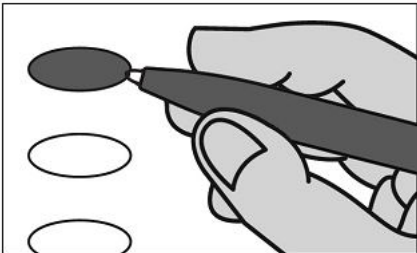
- ☐ Tyler Parsons  
Osage City

☐ \_\_\_\_\_  
Write-in

State of Kansas Official General Ballot  
Osage County  
November 4, 2025

Osage City Ward 3

INSTRUCTIONS



Making Selections

Fill in the oval to the left of the name of your choice. You must darken the oval completely (●), and do not make any marks outside of the oval.

To Write-in a name, you must darken the oval to the left of line provided.

If you tear, deface or make a mistake and wrongfully mark this ballot, you must return it to the Election Board and receive a new ballot.

Osage City

Council Member  
Ward 3  
Vote for One

- ☐ Ryan Trego  
Osage City
- ☐  
Write-in

Unified School District 420

School Board Member  
District A Position 4  
Vote for One

- ☐ Tyler Parsons  
Osage City
- ☐  
Write-in

School Board Member  
District B Position 5  
Vote for One

- ☐ Eric Ferrer  
Osage City
- ☐ Alexandra Carson  
Osage City
- ☐  
Write-in

Unified School District 420

School Board Member  
District C Position 6  
Vote for One

- ☐ Corey Linton  
Osage City
- ☐ Jessica Dorsey  
Osage City
- ☐  
Write-in

Frontier Extension District

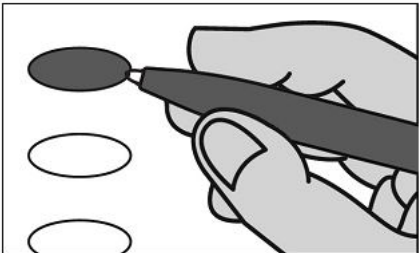
Extension Council Member  
Vote for Two or Fewer

- ☐ Don Montgomery  
Burlingame
- ☐  
Write-in
- ☐  
Write-in

State of Kansas Official General Ballot  
Osage County  
November 4, 2025

Osage City Ward 4

INSTRUCTIONS



Making Selections

Fill in the oval to the left of the name of your choice. You must darken the oval completely (●), and do not make any marks outside of the oval.

To Write-in a name, you must darken the oval to the left of line provided.

If you tear, deface or make a mistake and wrongfully mark this ballot, you must return it to the Election Board and receive a new ballot.

Osage City

Council Member  
Ward 4  
Vote for One

☐ Susan M. Smith  
Osage City

☐ \_\_\_\_\_  
Write-in

Unified School District 420

School Board Member  
District A Position 4  
Vote for One

☐ Tyler Parsons  
Osage City

☐ \_\_\_\_\_  
Write-in

School Board Member  
District B Position 5  
Vote for One

☐ Eric Ferrer  
Osage City

☐ Alexandra Carson  
Osage City

☐ \_\_\_\_\_  
Write-in

Unified School District 420

School Board Member  
District C Position 6  
Vote for One

☐ Corey Linton  
Osage City

☐ Jessica Dorsey  
Osage City

☐ \_\_\_\_\_  
Write-in

Frontier Extension District

Extension Council Member  
Vote for Two or Fewer

☐ Don Montgomery  
Burlingame

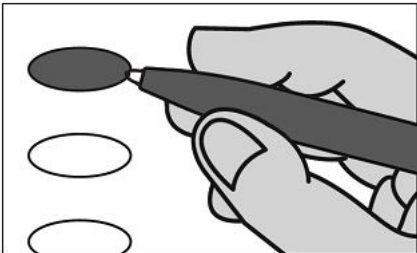
☐ \_\_\_\_\_  
Write-in

☐ \_\_\_\_\_  
Write-in

State of Kansas Official General Ballot  
Osage County  
November 4, 2025

North Ridgeway City

INSTRUCTIONS



Making Selections

Fill in the oval to the left of the name of your choice. You must darken the oval completely (●), and do not make any marks outside of the oval.

To Write-in a name, you must darken the oval to the left of line provided.

If you tear, deface or make a mistake and wrongfully mark this ballot, you must return it to the Election Board and receive a new ballot.

Unified School District 434

School Board Member  
Position 4

Vote for One

☐ **Kylie Wiscombe-Hastings**  
Overbrook

☐

Write-in

School Board Member  
Position 5

Vote for One

☐ **Tanner Black**  
Carbondale

☐

Write-in

School Board Member  
Position 6

Vote for One

☐ **Stephenie Ganger**  
Carbondale

☐

Write-in

City of Carbondale

Council Member

Vote for Three or Fewer

☐ **Ronald Moeller**  
Carbondale

☐

Write-in

☐

Write-in

☐

Write-in

School Board Member  
Position 7

Unexpired Term

Vote for One

☐ **Jamie Sowers**  
Overbrook

☐ **Ben W. Fawl**  
Overbrook

☐

Write-in

Unified School District 434

School Board Member  
Position 1

Unexpired Term

Vote for One

☐ **Amy Huizenga**  
Overbrook

☐

Write-in

Frontier Extension District

Extension Council Member

Vote for Two or Fewer

☐ **Don Montgomery**  
Burlingame

☐

Write-in

☐

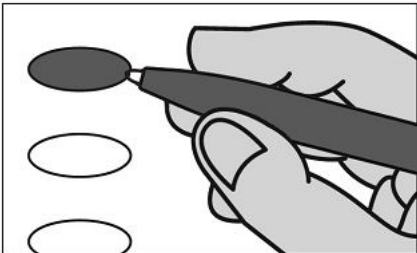
Write-in



State of Kansas Official General Ballot  
Osage County  
November 4, 2025

North Ridgeway 434

INSTRUCTIONS



Making Selections

Fill in the oval to the left of the name of your choice. You must darken the oval completely (●), and do not make any marks outside of the oval.

To Write-in a name, you must darken the oval to the left of line provided.

If you tear, deface or make a mistake and wrongfully mark this ballot, you must return it to the Election Board and receive a new ballot.

Unified School District 434

School Board Member  
Position 6  
Vote for One

☐ Stephenie Ganger  
Carbondale

☐

Write-in

School Board Member  
Position 7  
Unexpired Term  
Vote for One

☐ Jamie Sowers  
Overbrook

☐ Ben W. Fawl  
Overbrook

☐

Write-in

Frontier Extension District

Extension Council Member  
Vote for Two or Fewer

☐ Don Montgomery  
Burlingame

☐

Write-in

☐

Write-in

Unified School District 434

School Board Member  
Position 1  
Unexpired Term  
Vote for One

☐ Amy Huizenga  
Overbrook

☐

Write-in

School Board Member  
Position 4  
Vote for One

☐ Kylie Wiscombe-Hastings  
Overbrook

☐

Write-in

School Board Member  
Position 5  
Vote for One

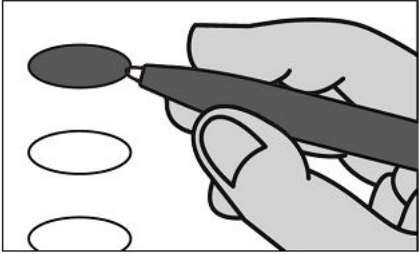
☐ Tanner Black  
Carbondale

☐

Write-in

State of Kansas Official General Ballot  
Osage County  
November 4, 2025

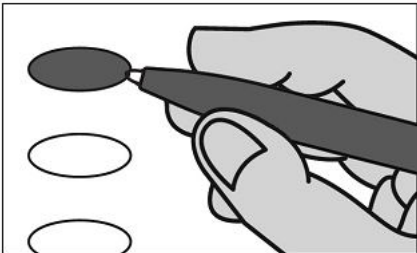
North Ridgeway 450

| INSTRUCTIONS  | Unified School District 450  | Question Submitted  |
|---|--|---|
| <div></div> <div><p><b>Making Selections</b></p><p>Fill in the oval to the left of the name of your choice. You must darken the oval completely (●), and do not make any marks outside of the oval.</p><p>To Write-in a name, you must darken the oval to the left of line provided.</p><p>To vote in favor of a question darken the oval to the left of the word "Yes." To vote against it, darken the oval to the left of the word "No."</p><p>If you tear, deface or make a mistake and wrongfully mark this ballot, you must return it to the Election Board and receive a new ballot.</p></div> | <div><p><b>School Board Member<br/>District C Position 6</b><br/>Vote for One</p><div><div><input type="radio"/> <b>Christina M. Flaming</b><br/>Berryton</div><div><input type="radio"/> <b>Kristin Fisher</b><br/>Berryton</div><div><input type="radio"/></div><div><div></div><div>Write-in</div></div></div></div> <div><p><b>Frontier Extension District</b></p><p><b>Extension Council Member</b><br/>Vote for Two or Fewer</p><div><div><input type="radio"/> <b>Don Montgomery</b><br/>Burlingame</div><div><input type="radio"/></div><div><div></div><div>Write-in</div></div><div><div></div><div>Write-in</div></div></div></div> | <div><p>Shall the following be adopted?</p><p>Shall Unified School District No. 450, Shawnee County, Kansas (Shawnee Heights) (The "District") be authorized to issue general obligation bonds in an amount not to exceed \$65,000,000 (the "Bonds") to pay the costs to construct, furnish and equip: (a) improvements, additions and renovations to Berryton, Shawnee Heights, Tecumseh North, and Tecumseh South Elementary Schools, including classroom, ADA accessible playgrounds, building, mechanical, HVAC, parking and pick-up/drop-off improvements; (b) improvements, additions and renovations to Shawnee Heights Middle School, including classroom, new gymnasium, building, mechanical, HVAC, parking and transportation improvements; (c) improvements, additions and renovations to Shawnee Heights High School, including classroom, new gymnasium, stadium fieldhouse addition, kitchen, building, mechanical, HVAC, parking and transportation improvements; and (d) all improvements related thereto (the "Project"); and pay costs of issuance and interest on the Bonds during construction of the Project, all pursuant to the provisions of K.S.A. 10-101 <i>et seq.</i>, K.S.A 25-2018(f), K.S.A. 72-5457, and K.S.A 72-5458 <i>et seq.</i>?</p><div><div><input type="radio"/> <b>Yes</b></div><div><input type="radio"/> <b>No</b></div></div></div> |
| <div><p><b>Unified School District 450</b></p><p><b>School Board Member<br/>District A Position 4</b><br/>Vote for One</p><div><div><input type="radio"/> <b>Damon Lee Shore</b><br/>Topeka</div><div><input type="radio"/> <b>Buck Reuter</b><br/>Tecumseh</div><div><input type="radio"/></div><div><div></div><div>Write-in</div></div></div></div> <div><p><b>School Board Member<br/>District B Position 5</b><br/>Vote for One</p><div><div><input type="radio"/> <b>Erica Kay Price</b><br/>Tecumseh</div><div><input type="radio"/></div><div><div></div><div>Write-in</div></div></div></div>  |  |   |

State of Kansas Official General Ballot  
Osage County  
November 4, 2025

South Ridgeway City

INSTRUCTIONS



Making Selections

Fill in the oval to the left of the name of your choice. You must darken the oval completely (●), and do not make any marks outside of the oval.

To Write-in a name, you must darken the oval to the left of line provided.

If you tear, deface or make a mistake and wrongfully mark this ballot, you must return it to the Election Board and receive a new ballot.

City of Carbondale

Council Member

Vote for Three or Fewer

☐ Ronald Moeller  
Carbondale

☐ \_\_\_\_\_  
Write-in

☐ \_\_\_\_\_  
Write-in

☐ \_\_\_\_\_  
Write-in

Unified School District 434

School Board Member  
Position 4

Vote for One

☐ Kylie Wiscombe-Hastings  
Overbrook

☐ \_\_\_\_\_  
Write-in

School Board Member  
Position 5

Vote for One

☐ Tanner Black  
Carbondale

☐ \_\_\_\_\_  
Write-in

School Board Member  
Position 6

Vote for One

☐ Stephenie Ganger  
Carbondale

☐ \_\_\_\_\_  
Write-in

School Board Member  
Position 7

Unexpired Term

Vote for One

☐ Jamie Sowers  
Overbrook

☐ Ben W. Fawl  
Overbrook

☐ \_\_\_\_\_  
Write-in

Unified School District 434

School Board Member  
Position 1

Unexpired Term

Vote for One

☐ Amy Huizenga  
Overbrook

☐ \_\_\_\_\_  
Write-in

Frontier Extension District

Extension Council Member

Vote for Two or Fewer

☐ Don Montgomery  
Burlingame

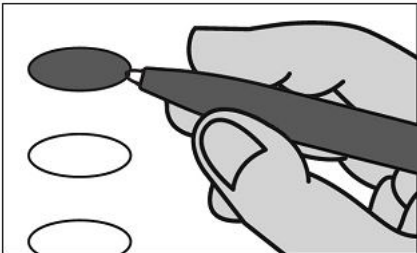
☐ \_\_\_\_\_  
Write-in

☐ \_\_\_\_\_  
Write-in

State of Kansas Official General Ballot  
Osage County  
November 4, 2025

South Ridgeway 434

INSTRUCTIONS



Making Selections

Fill in the oval to the left of the name of your choice. You must darken the oval completely (●), and do not make any marks outside of the oval.

To Write-in a name, you must darken the oval to the left of line provided.

If you tear, deface or make a mistake and wrongfully mark this ballot, you must return it to the Election Board and receive a new ballot.

Unified School District 434

School Board Member  
Position 6  
Vote for One

☐ Stephenie Ganger  
Carbondale

☐

Write-in

School Board Member  
Position 7  
Unexpired Term  
Vote for One

☐ Jamie Sowers  
Overbrook

☐ Ben W. Fawl  
Overbrook

☐

Write-in

Frontier Extension District

Extension Council Member  
Vote for Two or Fewer

☐ Don Montgomery  
Burlingame

☐

Write-in

☐

Write-in

Unified School District 434

School Board Member  
Position 1  
Unexpired Term  
Vote for One

☐ Amy Huizenga  
Overbrook

☐

Write-in

School Board Member  
Position 4  
Vote for One

☐ Kylie Wiscombe-Hastings  
Overbrook

☐

Write-in

School Board Member  
Position 5  
Vote for One

☐ Tanner Black  
Carbondale

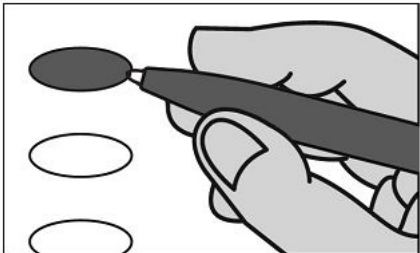
☐

Write-in

State of Kansas Official General Ballot  
Osage County  
November 4, 2025

Scranton City

INSTRUCTIONS



Making Selections

Fill in the oval to the left of the name of your choice. You must darken the oval completely (●), and do not make any marks outside of the oval.

To Write-in a name, you must darken the oval to the left of line provided.

If you tear, deface or make a mistake and wrongfully mark this ballot, you must return it to the Election Board and receive a new ballot.

City of Scranton

Mayor  
Vote for One

☐ Brian Scott Lester  
Scranton

☐ \_\_\_\_\_  
Write-in

Council Member  
Vote for Two or Fewer

☐ Philippe C. Côté  
Scranton

☐ Tim Nedeau  
Scranton

☐ Kallie Recob  
Scranton

☐ Allison Vandevord  
Scranton

☐ Justin Wheeler  
Scranton

☐ \_\_\_\_\_  
Write-in

☐ \_\_\_\_\_  
Write-in

Unified School District 434

School Board Member  
Position 1  
Unexpired Term  
Vote for One

☐ Amy Huizenga  
Overbrook

☐ \_\_\_\_\_  
Write-in

School Board Member  
Position 4  
Vote for One

☐ Kylie Wiscombe-Hastings  
Overbrook

☐ \_\_\_\_\_  
Write-in

School Board Member  
Position 5  
Vote for One

☐ Tanner Black  
Carbondale

☐ \_\_\_\_\_  
Write-in

School Board Member  
Position 6  
Vote for One

☐ Stephenie Ganger  
Carbondale

☐ \_\_\_\_\_  
Write-in

School Board Member  
Position 7  
Unexpired Term  
Vote for One

☐ Ben W. Fawl  
Overbrook

☐ Jamie Sowers  
Overbrook

☐ \_\_\_\_\_  
Write-in

Frontier Extension District

Extension Council Member  
Vote for Two or Fewer

☐ Don Montgomery  
Burlingame

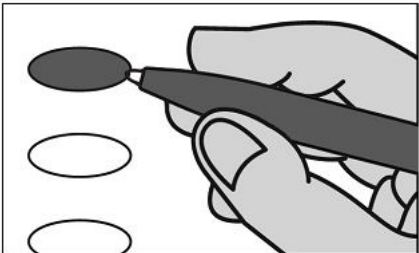
☐ \_\_\_\_\_  
Write-in

☐ \_\_\_\_\_  
Write-in

State of Kansas Official General Ballot  
Osage County  
November 4, 2025

Scranton 434

INSTRUCTIONS



Making Selections

Fill in the oval to the left of the name of your choice. You must darken the oval completely (●), and do not make any marks outside of the oval.

To Write-in a name, you must darken the oval to the left of line provided.

If you tear, deface or make a mistake and wrongfully mark this ballot, you must return it to the Election Board and receive a new ballot.

Unified School District 434

School Board Member  
Position 6  
Vote for One

☐ Stephenie Ganger  
Carbondale

☐

Write-in

School Board Member  
Position 7  
Unexpired Term  
Vote for One

☐ Ben W. Fawl  
Overbrook

☐ Jamie Sowers  
Overbrook

☐

Write-in

Frontier Extension District

Extension Council Member  
Vote for Two or Fewer

☐ Don Montgomery  
Burlingame

☐

Write-in

☐

Write-in

Unified School District 434

School Board Member  
Position 1  
Unexpired Term  
Vote for One

☐ Amy Huizenga  
Overbrook

☐

Write-in

School Board Member  
Position 4  
Vote for One

☐ Kylie Wiscombe-Hastings  
Overbrook

☐

Write-in

School Board Member  
Position 5  
Vote for One

☐ Tanner Black  
Carbondale

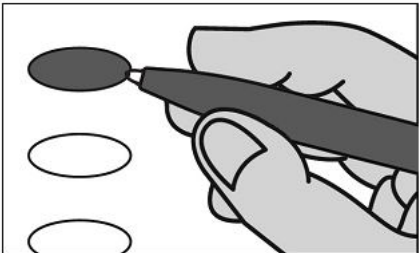
☐

Write-in

State of Kansas Official General Ballot  
Osage County  
November 4, 2025

Scranton 454

INSTRUCTIONS



Making Selections

Fill in the oval to the left of the name of your choice. You must darken the oval completely (●), and do not make any marks outside of the oval.

To Write-in a name, you must darken the oval to the left of line provided.

If you tear, deface or make a mistake and wrongfully mark this ballot, you must return it to the Election Board and receive a new ballot.

Frontier Extension District

Extension Council Member  
Vote for Two or Fewer

☐ Don Montgomery  
Burlingame

☐

Write-in

☐

Write-in

Unified School District 454

School Board Member  
District 1 Position 4  
Vote for One

☐ Krista Rowley  
Burlingame

☐

Write-in

School Board Member  
District 2 Position 5  
Vote for One

☐ Pamela Masters  
Burlingame

☐

Write-in

School Board Member  
District 3 Position 6  
Vote for One

☐ Audrey Ross  
Burlingame

☐

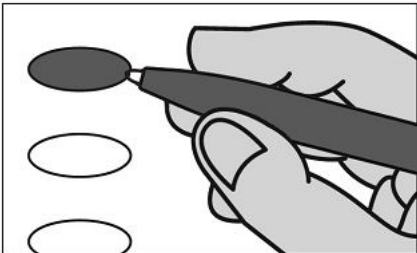
Write-in



State of Kansas Official General Ballot  
Osage County  
November 4, 2025

Superior 420

INSTRUCTIONS



Making Selections

Fill in the oval to the left of the name of your choice. You must darken the oval completely (●), and do not make any marks outside of the oval.

To Write-in a name, you must darken the oval to the left of line provided.

If you tear, deface or make a mistake and wrongfully mark this ballot, you must return it to the Election Board and receive a new ballot.

Frontier Extension District

Extension Council Member  
Vote for Two or Fewer

☐ Don Montgomery  
Burlingame

☐

Write-in

☐

Write-in

Unified School District 420

School Board Member  
District A Position 4  
Vote for One

☐ Tyler Parsons  
Osage City

☐

Write-in

School Board Member  
District B Position 5  
Vote for One

☐ Eric Ferrer  
Osage City

☐ Alexandra Carson  
Osage City

☐

Write-in

School Board Member  
District C Position 6  
Vote for One

☐ Corey Linton  
Osage City

☐ Jessica Dorsey  
Osage City

☐

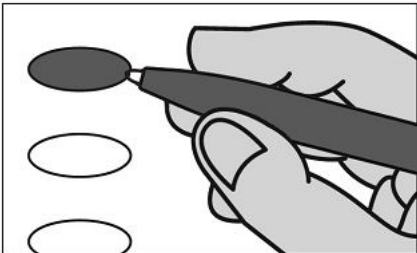
Write-in



State of Kansas Official General Ballot  
Osage County  
November 4, 2025

Superior 421

INSTRUCTIONS



Making Selections

Fill in the oval to the left of the name of your choice. You must darken the oval completely (●), and do not make any marks outside of the oval.

To Write-in a name, you must darken the oval to the left of line provided.

If you tear, deface or make a mistake and wrongfully mark this ballot, you must return it to the Election Board and receive a new ballot.

Frontier Extension District

Extension Council Member  
Vote for Two or Fewer

☐ Don Montgomery  
Burlingame

☐

Write-in

☐

Write-in

Unified School District 421

School Board Member  
Position 1B  
Vote for One

☐ Kelsey Winsky  
Lyndon

☐ Luke V. Edington  
Lyndon

☐

Write-in

School Board Member  
Position 2B  
Vote for One

☐ Melissa Herdman  
Lyndon

☐

Write-in

School Board Member  
Position 3B  
Vote for One

☐ Jennifer Roy  
Vassar

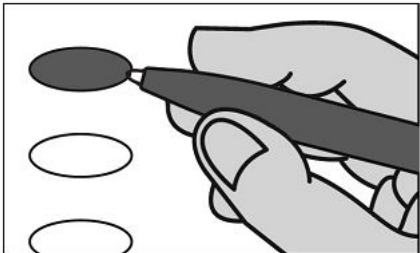
☐

Write-in

State of Kansas Official General Ballot  
Osage County  
November 4, 2025

North Valley Brook City

INSTRUCTIONS



Making Selections

Fill in the oval to the left of the name of your choice. You must darken the oval completely (●), and do not make any marks outside of the oval.

To Write-in a name, you must darken the oval to the left of line provided.

To vote in favor of a question darken the oval to the left of the word "Yes." To vote against it, darken the oval to the left of the word "No."

If you tear, deface or make a mistake and wrongfully mark this ballot, you must return it to the Election Board and receive a new ballot.

Unified School District 421

School Board Member  
Position 1B

Vote for One

- ☐ Luke V. Edington  
Lyndon
- ☐ Kelsey Winsky  
Lyndon

☐ \_\_\_\_\_  
Write-in

School Board Member  
Position 2B

Vote for One

- ☐ Melissa Herdman  
Lyndon

☐ \_\_\_\_\_  
Write-in

School Board Member  
Position 3B

Vote for One

- ☐ Jennifer Roy  
Vassar

☐ \_\_\_\_\_  
Write-in

Question Submitted

SHALL THE FOLLOWING BE ADOPTED?

"Shall a retailers' sales tax in the amount of one-half percent (.5%) be levied in the City of Lyndon, Kansas, for the purpose of providing additional revenue for public services within the City, including, but not limited to the maintenance, replacement, improvement and expansion of City water and sewer systems, public streets and culverts, and public parks to take effect on April 1, 2026 and expire on March 31, 2036.

- ☐ Yes
- ☐ No

City of Lyndon

Council Member

Vote for Three or Fewer

- ☐ Kevin Culley  
Lyndon
- ☐ Charles B. Hanna  
Lyndon
- ☐ Kevin Heit  
Lyndon
- ☐ Debra Rasmusson  
Lyndon
- ☐ Darin W. Schmitt  
Lyndon
- ☐ Hannah Wilson  
Lyndon

☐ \_\_\_\_\_  
Write-in

☐ \_\_\_\_\_  
Write-in

☐ \_\_\_\_\_  
Write-in

Frontier Extension District

Extension Council Member

Vote for Two or Fewer

- ☐ Don Montgomery  
Burlingame

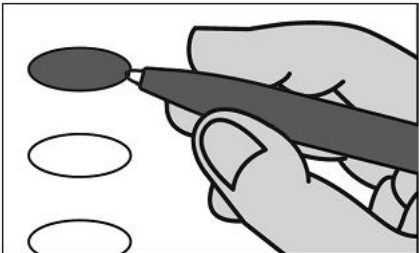
☐ \_\_\_\_\_  
Write-in

☐ \_\_\_\_\_  
Write-in

State of Kansas Official General Ballot  
Osage County  
November 4, 2025

North Valley Brook 420

INSTRUCTIONS



Making Selections

Fill in the oval to the left of the name of your choice. You must darken the oval completely (●), and do not make any marks outside of the oval.

To Write-in a name, you must darken the oval to the left of line provided.

If you tear, deface or make a mistake and wrongfully mark this ballot, you must return it to the Election Board and receive a new ballot.

Frontier Extension District

Extension Council Member  
Vote for Two or Fewer

☐ Don Montgomery  
Burlingame

☐

Write-in

☐

Write-in

Unified School District 420

School Board Member  
District A Position 4  
Vote for One

☐ Tyler Parsons  
Osage City

☐

Write-in

School Board Member  
District B Position 5  
Vote for One

☐ Alexandra Carson  
Osage City

☐ Eric Ferrer  
Osage City

☐

Write-in

School Board Member  
District C Position 6  
Vote for One

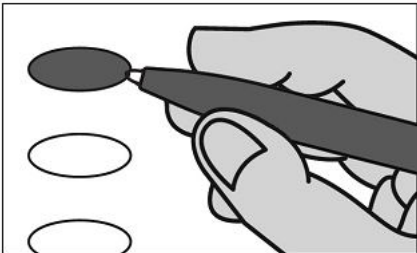
☐ Jessica Dorsey  
Osage City

☐ Corey Linton  
Osage City

☐

Write-in

INSTRUCTIONS



Making Selections

Fill in the oval to the left of the name of your choice. You must darken the oval completely (●), and do not make any marks outside of the oval.

To Write-in a name, you must darken the oval to the left of line provided.

If you tear, deface or make a mistake and wrongfully mark this ballot, you must return it to the Election Board and receive a new ballot.

Frontier Extension District

Extension Council Member  
Vote for Two or Fewer

☐ Don Montgomery  
Burlingame

☐

Write-in

☐

Write-in

Unified School District 421

School Board Member  
Position 1B  
Vote for One

☐ Luke V. Edington  
Lyndon

☐ Kelsey Winsky  
Lyndon

☐

Write-in

School Board Member  
Position 2B  
Vote for One

☐ Melissa Herdman  
Lyndon

☐

Write-in

School Board Member  
Position 3B  
Vote for One

☐ Jennifer Roy  
Vassar

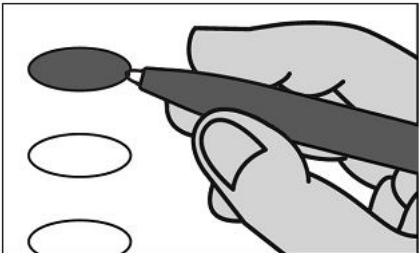
☐

Write-in

State of Kansas Official General Ballot  
Osage County  
November 4, 2025

South Valley Brook City

INSTRUCTIONS



Making Selections

Fill in the oval to the left of the name of your choice. You must darken the oval completely (●), and do not make any marks outside of the oval.

To Write-in a name, you must darken the oval to the left of line provided.

To vote in favor of a question darken the oval to the left of the word "Yes." To vote against it, darken the oval to the left of the word "No."

If you tear, deface or make a mistake and wrongfully mark this ballot, you must return it to the Election Board and receive a new ballot.

Unified School District 421

School Board Member  
Position 1B

Vote for One

- ☐ Kelsey Winsky  
Lyndon
- ☐ Luke V. Edington  
Lyndon

☐ \_\_\_\_\_  
Write-in

School Board Member  
Position 2B

Vote for One

- ☐ Melissa Herdman  
Lyndon

☐ \_\_\_\_\_  
Write-in

School Board Member  
Position 3B

Vote for One

- ☐ Jennifer Roy  
Vassar

☐ \_\_\_\_\_  
Write-in

City of Lyndon

Council Member

Vote for Three or Fewer

- ☐ Charles B. Hanna  
Lyndon
- ☐ Kevin Heit  
Lyndon
- ☐ Debra Rasmusson  
Lyndon
- ☐ Darin W. Schmitt  
Lyndon
- ☐ Hannah Wilson  
Lyndon
- ☐ Kevin Culley  
Lyndon

☐ \_\_\_\_\_  
Write-in

☐ \_\_\_\_\_  
Write-in

☐ \_\_\_\_\_  
Write-in

Question Submitted

SHALL THE FOLLOWING BE ADOPTED?

"Shall a retailers' sales tax in the amount of one-half percent (.5%) be levied in the City of Lyndon, Kansas, for the purpose of providing additional revenue for public services within the City, including, but not limited to the maintenance, replacement, improvement and expansion of City water and sewer systems, public streets and culverts, and public parks to take effect on April 1, 2026 and expire on March 31, 2036.

- ☐ Yes
- ☐ No

Frontier Extension District

Extension Council Member

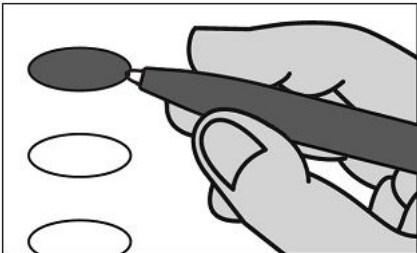
Vote for Two or Fewer

- ☐ Don Montgomery  
Burlingame

☐ \_\_\_\_\_  
Write-in

☐ \_\_\_\_\_  
Write-in

INSTRUCTIONS



Making Selections

Fill in the oval to the left of the name of your choice. You must darken the oval completely (●), and do not make any marks outside of the oval.

To Write-in a name, you must darken the oval to the left of line provided.

If you tear, deface or make a mistake and wrongfully mark this ballot, you must return it to the Election Board and receive a new ballot.

Frontier Extension District

Extension Council Member  
Vote for Two or Fewer

☐ Don Montgomery  
Burlingame

☐

Write-in

☐

Write-in

Unified School District 421

School Board Member  
Position 1B  
Vote for One

☐ Kelsey Winsky  
Lyndon

☐ Luke V. Edington  
Lyndon

☐

Write-in

School Board Member  
Position 2B  
Vote for One

☐ Melissa Herdman  
Lyndon

☐

Write-in

School Board Member  
Position 3B  
Vote for One

☐ Jennifer Roy  
Vassar

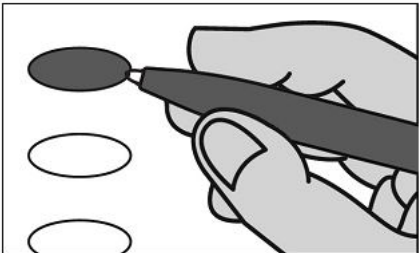
☐

Write-in

State of Kansas Official General Ballot  
Osage County  
November 4, 2025

South Valley Brook 456

INSTRUCTIONS



Making Selections

Fill in the oval to the left of the name of your choice. You must darken the oval completely (●), and do not make any marks outside of the oval.

To Write-in a name, you must darken the oval to the left of line provided.

If you tear, deface or make a mistake and wrongfully mark this ballot, you must return it to the Election Board and receive a new ballot.

Unified School District 456

School Board Member  
District 2 Position 2  
Unexpired Term  
Vote for One

☐ Marlin Orear  
Melvern

☐ \_\_\_\_\_  
Write-in

Frontier Extension District

Extension Council Member  
Vote for Two or Fewer

☐ Don Montgomery  
Burlingame

☐ \_\_\_\_\_  
Write-in

☐ \_\_\_\_\_  
Write-in

Unified School District 456

School Board Member  
District 1 Position 4  
Vote for One

☐ Mark Lacey  
Melvern

☐ \_\_\_\_\_  
Write-in

School Board Member  
District 2 Position 5  
Vote for One

☐ Deborah S. Woodson  
Melvern

☐ Maureen Warner  
Melvern

☐ \_\_\_\_\_  
Write-in

School Board Member  
District 3 Position 6  
Vote for One

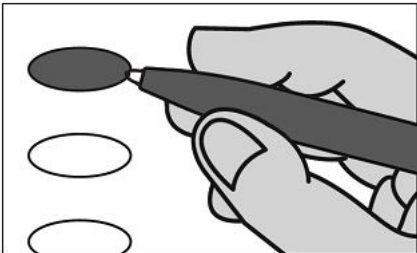
☐ Chelsey D. Masenthin  
Quenemo

☐ \_\_\_\_\_  
Write-in

State of Kansas Official General Ballot  
Osage County  
November 4, 2025

Vassar 287

INSTRUCTIONS



Making Selections

Fill in the oval to the left of the name of your choice. You must darken the oval completely (●), and do not make any marks outside of the oval.

To Write-in a name, you must darken the oval to the left of line provided.

If you tear, deface or make a mistake and wrongfully mark this ballot, you must return it to the Election Board and receive a new ballot.

Frontier Extension District

Extension Council Member  
Vote for Two or Fewer

☐ Don Montgomery  
Burlingame

☐

Write-in

☐

Write-in

Unified School District 287

School Board Member  
Postion 4  
Vote for One

☐ Devin Wray  
Ottawa

☐ Jayson Wiscombe  
Pomona

☐

Write-in

School Board Member  
Position 5  
Vote for One

☐ Denise Robinson  
Pomona

☐

Write-in

School Board Member  
Position 6  
Vote for One

☐ Stephanie Anderson  
Pomona

☐

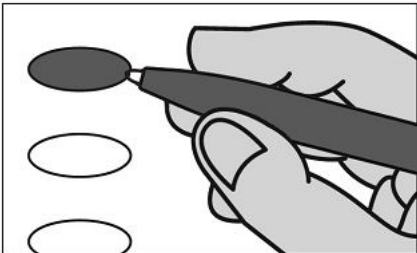
Write-in



State of Kansas Official General Ballot  
Osage County  
November 4, 2025

Vassar 421

INSTRUCTIONS



Making Selections

Fill in the oval to the left of the name of your choice. You must darken the oval completely (●), and do not make any marks outside of the oval.

To Write-in a name, you must darken the oval to the left of line provided.

If you tear, deface or make a mistake and wrongfully mark this ballot, you must return it to the Election Board and receive a new ballot.

Frontier Extension District

Extension Council Member  
Vote for Two or Fewer

☐ Don Montgomery  
Burlingame

☐

Write-in

☐

Write-in

Unified School District 421

School Board Member  
Position 1B  
Vote for One

☐ Kelsey Winsky  
Lyndon

☐ Luke V. Edington  
Lyndon

☐

Write-in

School Board Member  
Position 2B  
Vote for One

☐ Melissa Herdman  
Lyndon

☐

Write-in

School Board Member  
Position 3B  
Vote for One

☐ Jennifer Roy  
Vassar

☐

Write-in